



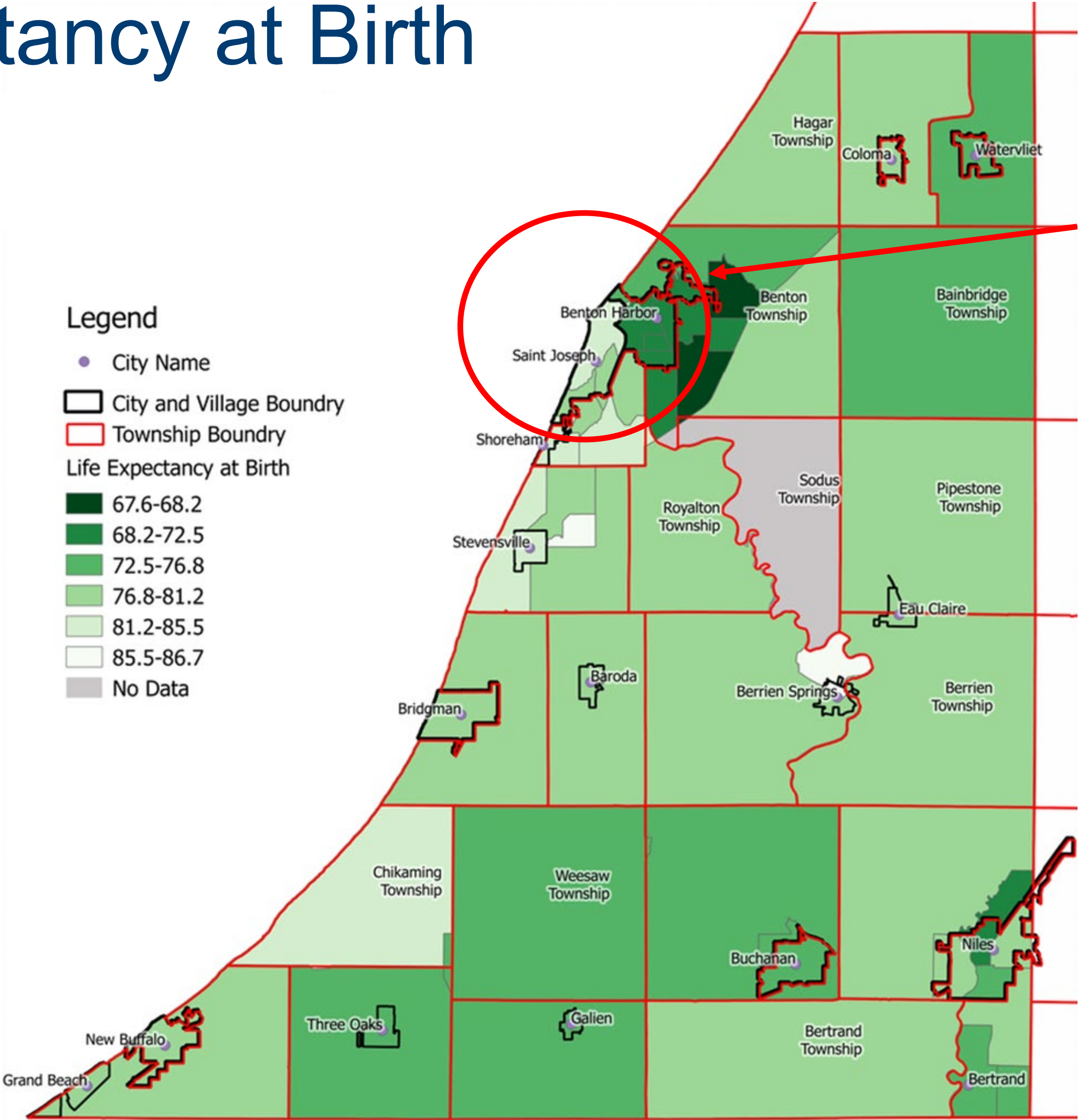
Lynn Todman, PhD



Executive Director of Population Health
Spectrum Health Lakeland

2010-2015 Life Expectancy at Birth

United States: 78.7
Michigan: 78.1
Berrien County: 77.3 years



High
concentration
of low life
expectancy
tracts

Berrien Census Tracts: 19-year Life Expectancy Gap

Life Expectancy/Census Tract		
5 Lowest (Census Tract)	Life Expectancy	Place (% AA)
21	67.6	Benton Heights (36%)
23	67.7	Benton Heights (31%)
22	69	Benton Heights (86%)
5	69.6	City of Benton Harbor (87%)
3	69.9	City of Benton Harbor (86%)
5 Highest (Census Tract)	Life Expectancy	Place (% AA)
8	81.9	St. Joseph (5.6%)
15	81.9	Stevensville (0.8%)
13	83.1	Shoreham (2.3%)
16	86.2	Lincoln Township (2.7%)
213	86.7	Berrien Springs (33.5%)

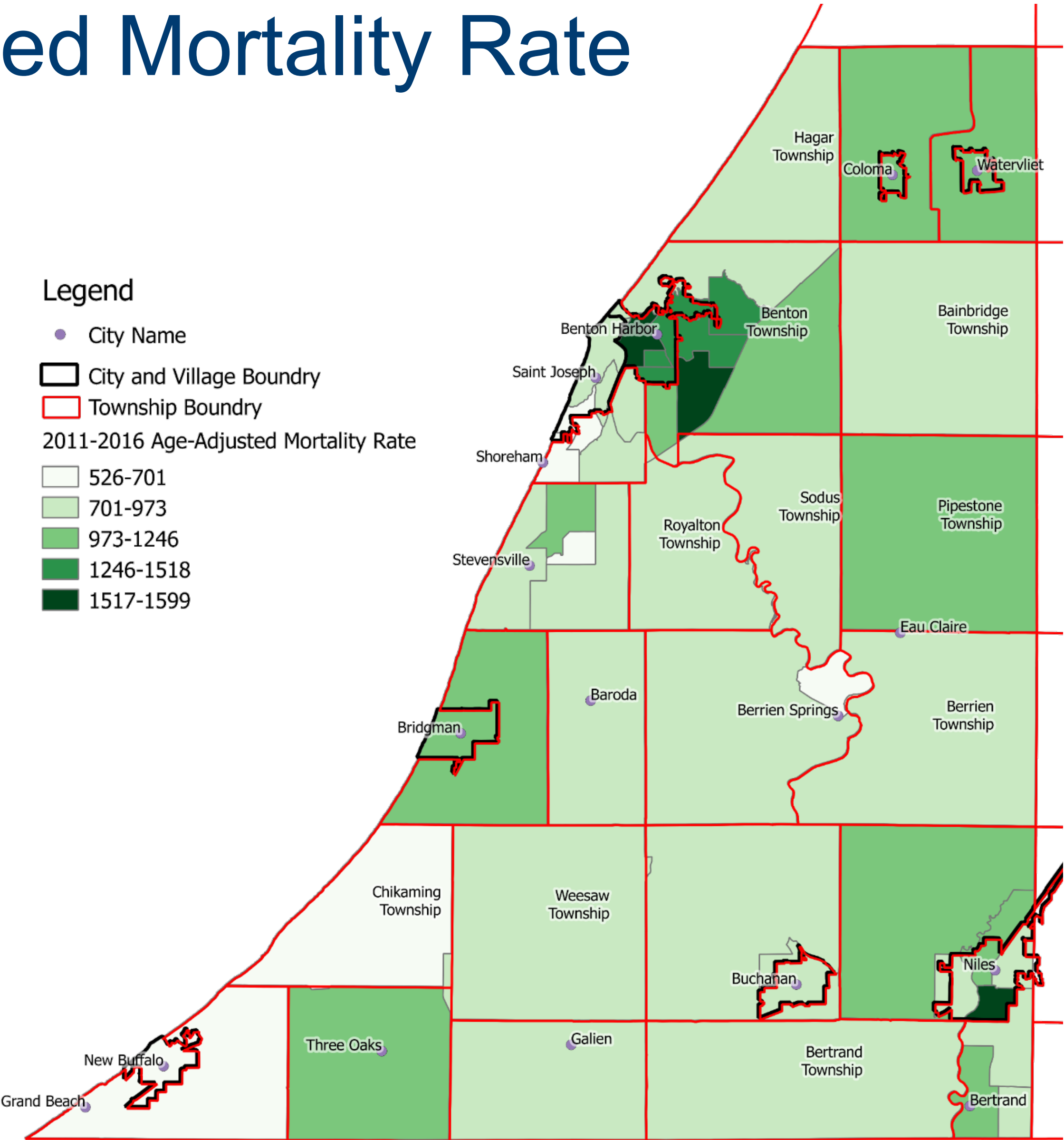
SJ-BH: 2 miles =
14.3 yr gap.

For every mile
traveled between
Benton Harbor
and St. Joseph,
there is a 7-year
reduction in life
expectancy.

2011-2016 Age-Adjusted Mortality Rate

per 100,000 by Census Tract

The highest death rate (1,598/100,000) is more than three times the lowest death rate (526/100,000)



68% AA's Berrien Live in High Death Rate Tracts

Age-Adjusted Mortality/Census Tract		
5 Lowest (Census Tract)	Age-Adjusted Mortality	Place (% AA)
21	1,598.62	Benton Heights (36%)
4	1,566.85	City of Benton Harbor (89.9%)
207	1,526.70	City of Niles (10.1%)
5	1,455.90	City of Benton Harbor (86.8%)
6	1,453.30	City of Benton Harbor (84.9%)
5 Highest (Census Tract)	Age-Adjusted Mortality	Place (% AA)
213	660.5	Berrien Springs (33.5%)
9	608.54	St. Joseph (8.6 %)
113	607.59	New Buffalo/Grand Beach/ Michiana (2.7%)
16	549.56	Stevensville (2.7%)
13	525.92	Shoreham (2.3%)

60% of high death rates tracts are majority AA

100% of low death rate tracts a majority white.

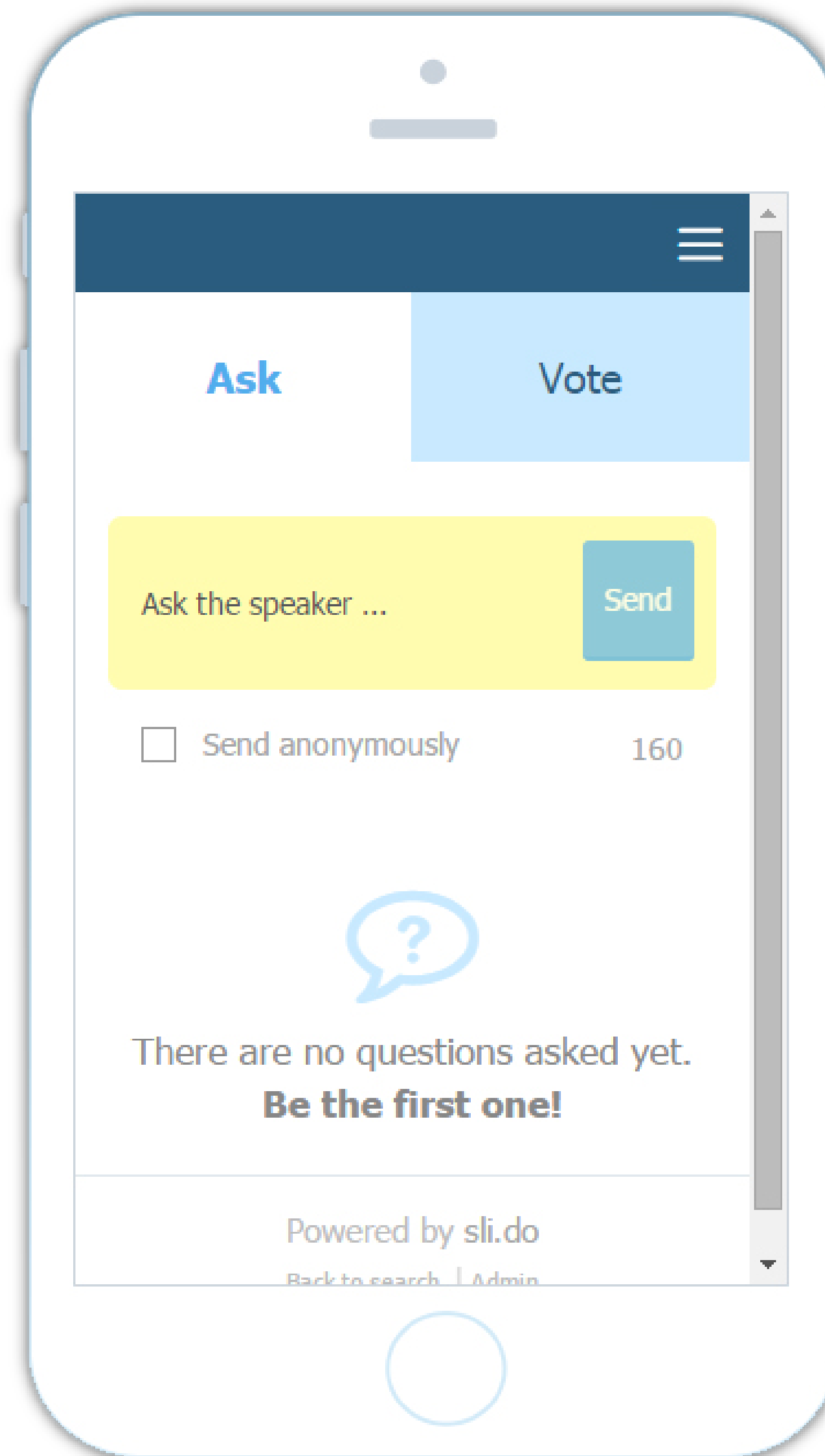
Death Rate Disparities

[illegible]

Questions?

Open a web browser and enter **sli.do** into the address field

Enter event code **#CGR1** to submit your questions throughout the presentation



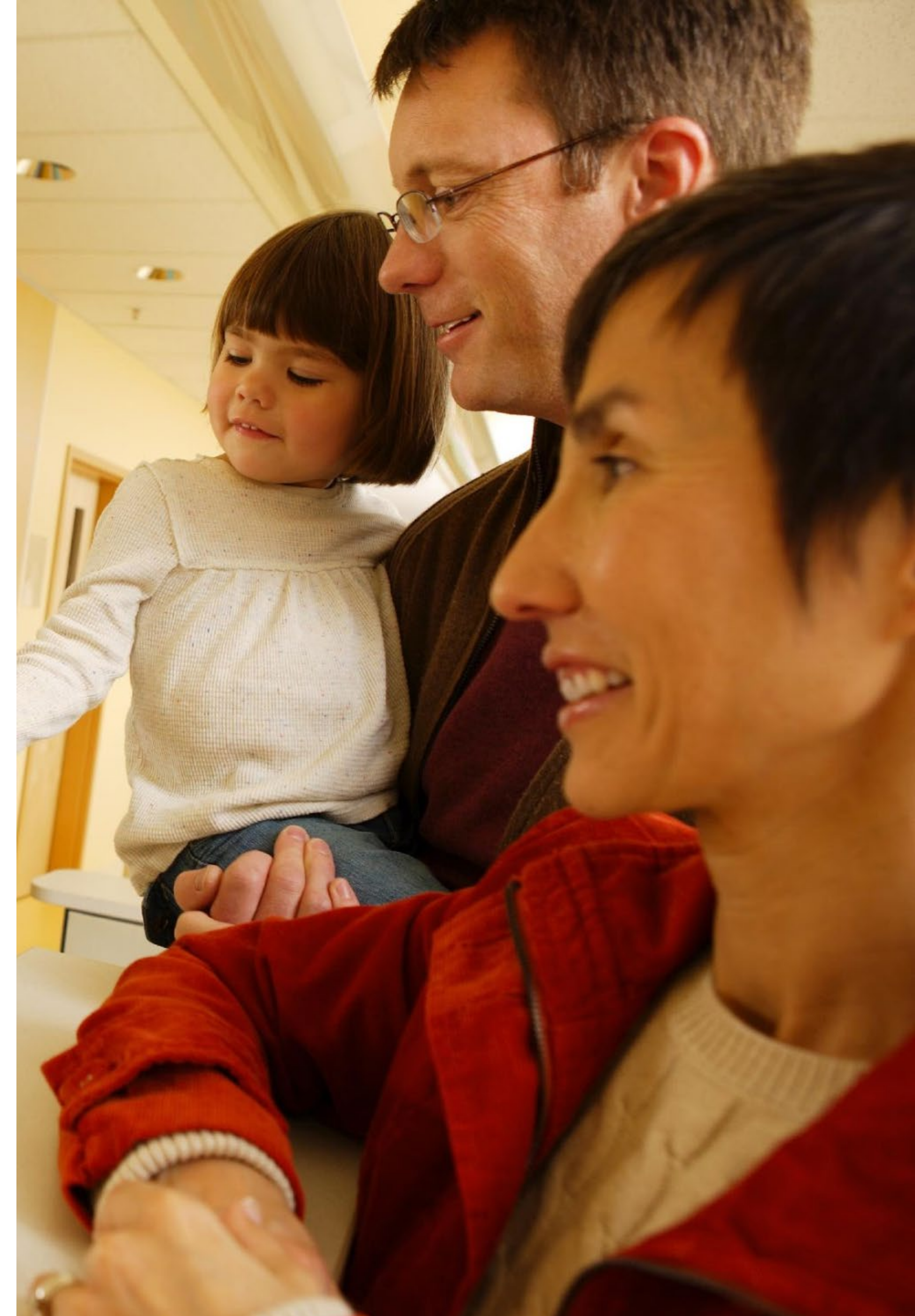


Advancing Health? It's About the Mind, the Body and the Community.

July 17, 2019

Today's Objectives:

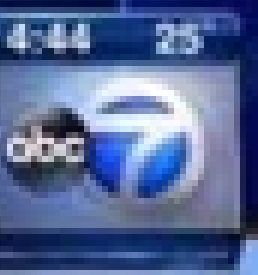
- Identify **unmet social needs** that impact health and prioritize meeting those needs to improve individual health
- Recognize roles, responsibilities and opportunities to **create social health** change at scale
- Distinguish **community health approaches** to population health improvement



Bechara Choucair, MD



ZONECAST K: COLD MORNING. MAINLY CLOUDY 36° ROMEONI



Bechara Choucair, MD



Advancing Health?

It's About the Mind, the Body and the Community.

Senior Vice President and Chief Community Health Officer
for Kaiser Permanente

OUR MISSION

To provide high-quality, affordable health care services and to improve the health of our members and the communities we serve.

OUR VISION

We are trusted partners in total health, collaborating with people to help them thrive, creating communities that are among the healthiest in the nation, and inspiring greater health for America and the world.



Investing in Social Health

To improve health outcomes across communities, evidence points to a **need to invest in social health.**

“*Do I buy the milk or do I get the medication? We have an all-in strategy to work with other health systems and civic organizations to end up with a holistic approach through which many more people can get their needs met.*”

– Bernard J. Tyson, Chief Executive Officer, Kaiser Permanente

“*"Broadening the debate beyond what should be spent on health care to include what should be invested in health—not only in health care but also in social services and public health—is warranted."*

– Elizabeth H. Bradley, Vassar College, Health Affairs

Social Needs in America Survey Revealed Gap in Addressing Unmet Social Needs

Unmet social needs are a barrier to health for all Americans.

68%

Had at least one
unmet social need
in the past year

People reporting unmet
social needs are

2x

as likely to rate their
health as fair or poor

97%

Of respondents want
medical providers to ask
about social needs during
care visits.



1 in 4 Americans

have had an unmet social need
they say was a barrier to health in
the past year.

A photograph of two men standing outdoors in a park-like setting. The man on the left is wearing a blue jacket over a red shirt and is holding a bicycle helmet. The man on the right is wearing light blue medical scrubs with a stethoscope around his neck. They are both smiling and looking at each other. A semi-transparent dark blue box with white text is overlaid on the right side of the image.

80% of Americans say it would be helpful for their medical provider to share information, recommend resources, help them apply, and follow up.

SOURCE: KAISER PERMANENTE SOCIAL NEEDS SURVEY

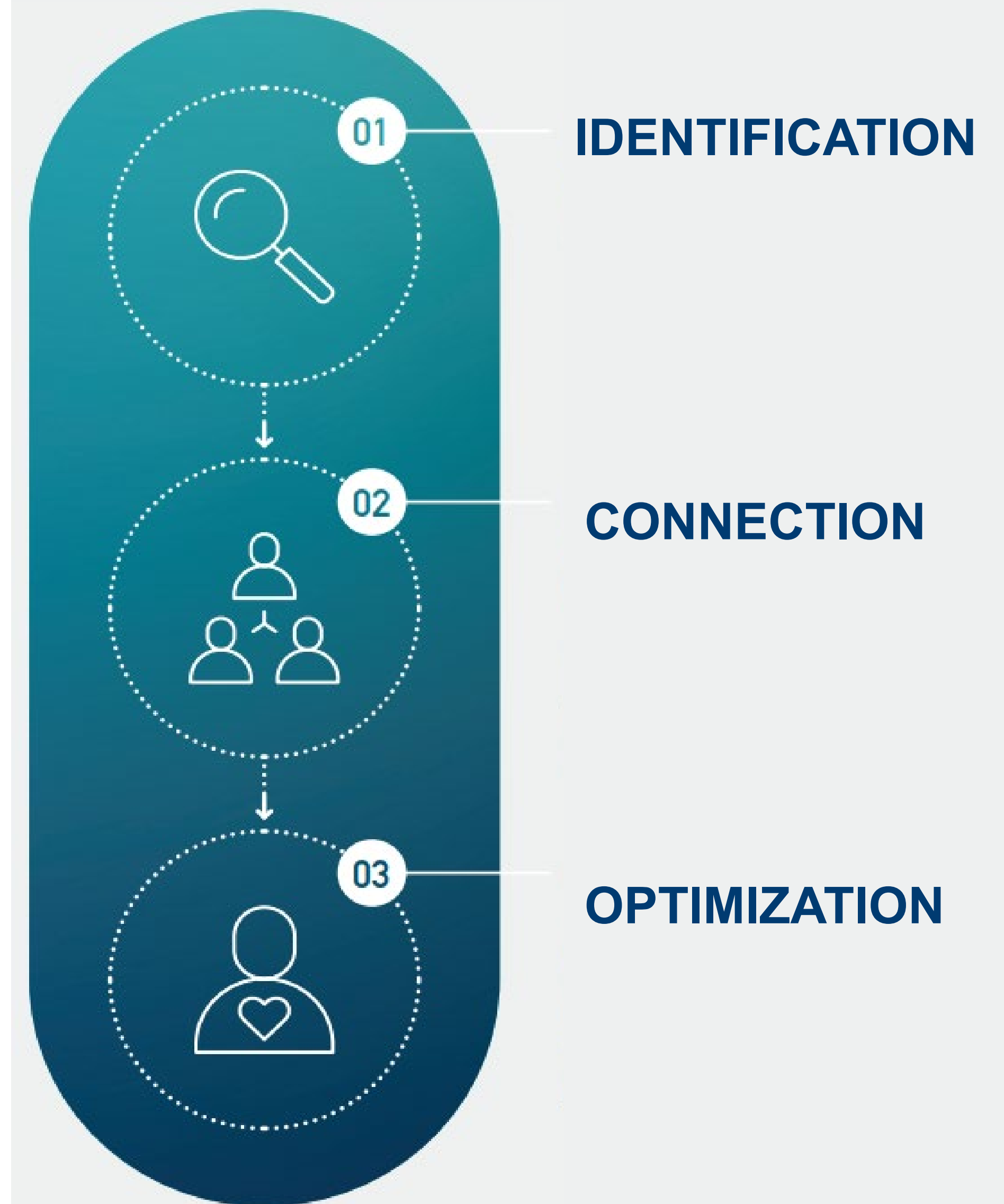


KAISER PERMANENTE®

Closing The Gap in Social Needs to Improve Total Health – Mind, Body, Community


Thrive Local aims to address unmet social needs. Our social health network will:

- Provide an online Resource Directory with up-to-date, searchable information on a wide range of social services and public benefits
- Engage Geographic Community Partner Networks, including community-based organizations and public agencies that health care providers can refer to.
- Partner with Unite Us to establish a technology platform that allows for two-way, closed-loop referrals.



#HousingForHealth

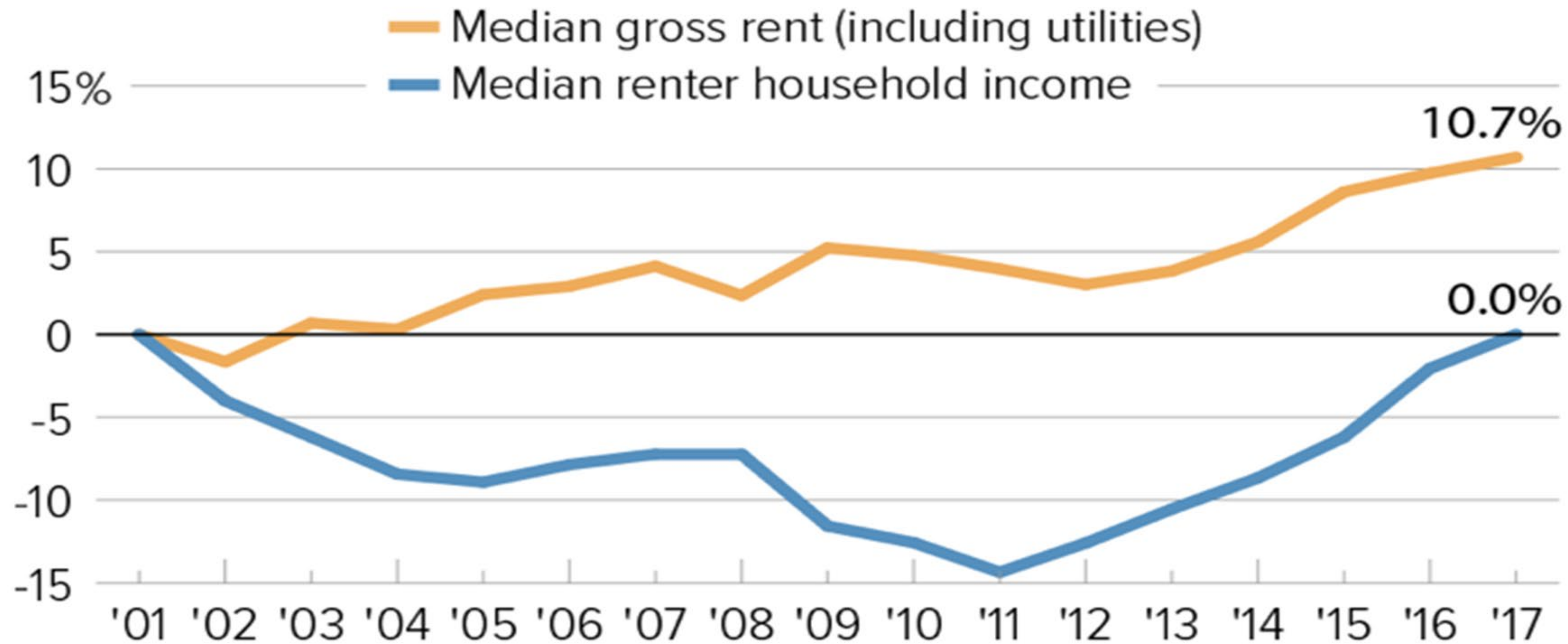


A photograph of two women in a kitchen, both laughing heartily. The woman on the left is wearing a blue top, and the woman on the right is wearing a yellow top. They are standing close together, and the woman on the right is holding a long-handled spoon. The background shows a kitchen with a window and some plants.

89% of Americans say safe and stable housing is very or extremely important to overall health.

Renters' Incomes Have Not Kept Up With Housing Costs

Percent change since 2001, adjusted for inflation



Source: CBPP tabulations of the Census Bureau's American Community Survey

Unsafe and Unhealth Housing Cost the U.S. Billions Annually

\$56B

Asthma

\$50B

Lead Poisoning

\$500M

Residential Fatalities from CO Poisoning

\$2.9B

Radon-Induced Lung Cancer

\$200B

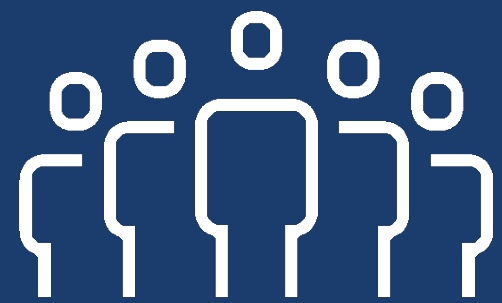
Unintentional Injuries

(National Center for Healthy Housing)

We Are Facing a Housing crisis

Our nation is facing a housing crisis. And Kaiser Permanente's communities are in the center, with some of the highest rates of both wealth and homelessness.

NATIONALLY:



More than 500,000 people in the US experience homelessness on any given night.

(U.S. Department of Housing and Urban Development)



Nearly 200,000 people experiencing homelessness are unsheltered.

(U.S. Department of Housing and Urban Development)

ACROSS KAISER PERMANENTE REGIONS:



25% of the Nation's homeless are in California.

(US Department of Housing and Urban Development)



King County, Washington has the **third largest concentration of people experiencing homelessness**, behind only LA and NYC.

(Applied Survey Research, 2017b)

41%

41% of all homeless in Washington, DC were recorded as **chronically homeless**, nearly twice the national average.

(Giambrone, 2017)

A Growing Health Crisis Nationwide and Close to Home



Widening gaps in affordability drive homelessness – and mortality rates – nationwide.

76%

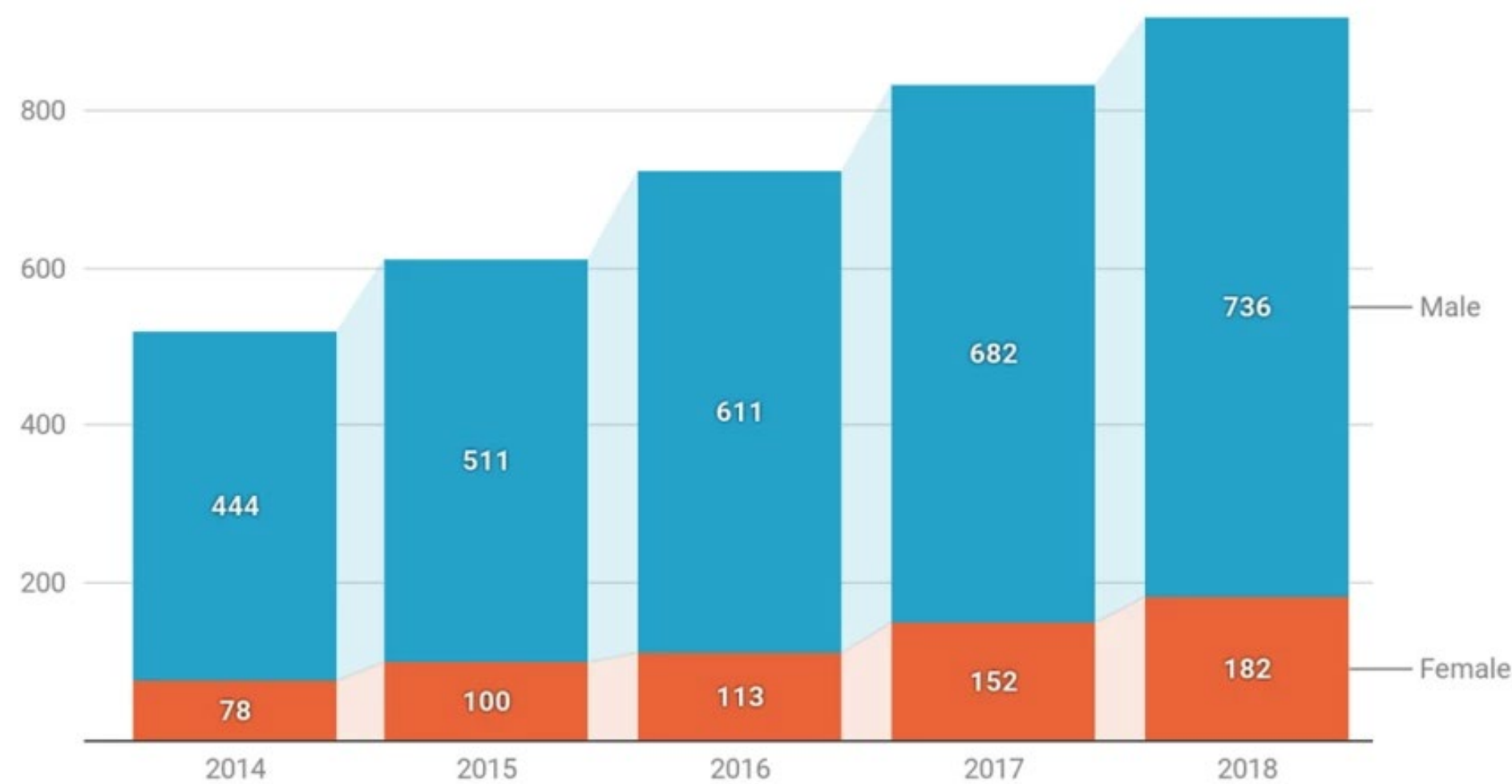
Increase in deaths among homeless individuals in Los Angeles in past five years

918

Homeless individuals passed away in Los Angeles in 2018

Homeless Deaths Surge In Los Angeles County

Of the 3,612 people who died from 2014 to 2018*, 4 in 5 were men. But during that period, the number of deaths among homeless women more than doubled.



*There were three deaths in which the coroner did not identify the gender. Those cases are not included in this graphic.

Credit: Harriet Blair Rowan/California Healthline

Source: Los Angeles County Department of Medical Examiner-Coroner

Engage Partners to Foster Healthier Communities

A secure, stable place to live is key to a person's ability to thrive.

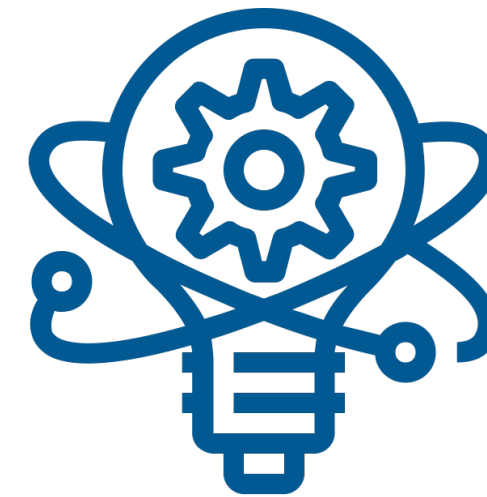
Through new partnerships and programs, we aim to:



End Chronic Homelessness in Our Communities through unique partnerships and programs



Increase Affordable Housing Supply in the regions and cities that need it most



Catalyze Innovation Across Programs by harnessing the power of technology



Shape Policy on Federal and Local Levels by working with national, state and city leaders

Emphasize Policies that Support Affordable Housing



Launched partnership with
**Mayors and CEOs for U.S.
Housing Investment**

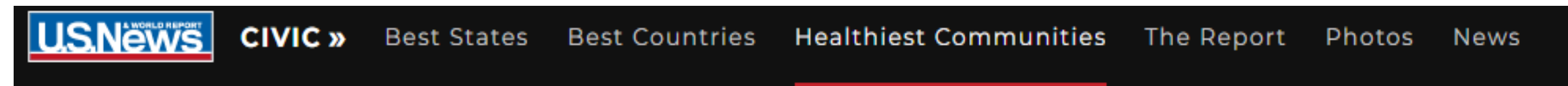


Met with mayors in our
footprint and beyond



Connected policy to our
community health strategy

Impact Investment to Prevent Displacement



HOME / CIVIC / HEALTHIEST COMMUNITIES

Kaiser Permanente to Focus on Housing, Homelessness With \$200M Commitment

Housing stability and health outcomes go hand in hand, company leaders say.

SAN FRANCISCO
BUSINESS TIMES

Why housing is now a health issue for Kaiser Permanente

“Housing and health go hand in hand, and we really cannot expect people to live healthy lives if they do not have stable housing.”

- Bechara Choucair, Chief Community Health Officer, Kaiser Permanente



Address Homelessness in Our Backyard



- There are currently 515 frail, elderly residents in Oakland, CA experiencing homelessness.
- Kaiser Permanente is developing a promising approach that can help.
- As of June 1, 317 residents have been housed.

BY-NAME LIST

Work with existing agencies on identified people in Oakland, by name and location, aged 50+ with at least one major health condition.



SUPPORTS

Engage partners to administer the list and provide services for **515 people** in 2019.



HOUSING

Connect individuals with the appropriate housing to meet their needs

Thriving Schools



Healthy Students, Staff & Teachers



Attendance



College Career
Readiness



School Wellness
Policies



Healthy Eating



Physical Activity



Social & Emotional
Well-being



Staff Breakroom
Makeovers



Labor
Management
Collaboration



Webinar Learning
Series

Resilience In School Environments

School-Based Interventions

- Onsite Alliance for a Healthier Generation (AHG) intervention
- Virtual school-focused tools and resources
- Kaiser Permanente workforce health
- Educational theatre

Content that Connects Communities

- Messaging and resources for educators, parents & students inside and outside of school
- Focus areas: basic science behind trauma and stress, coping strategies and life skills, resilience-building strategies
- Partnerships with other ACES/Resilience campaigns (i.e., Stress Health)

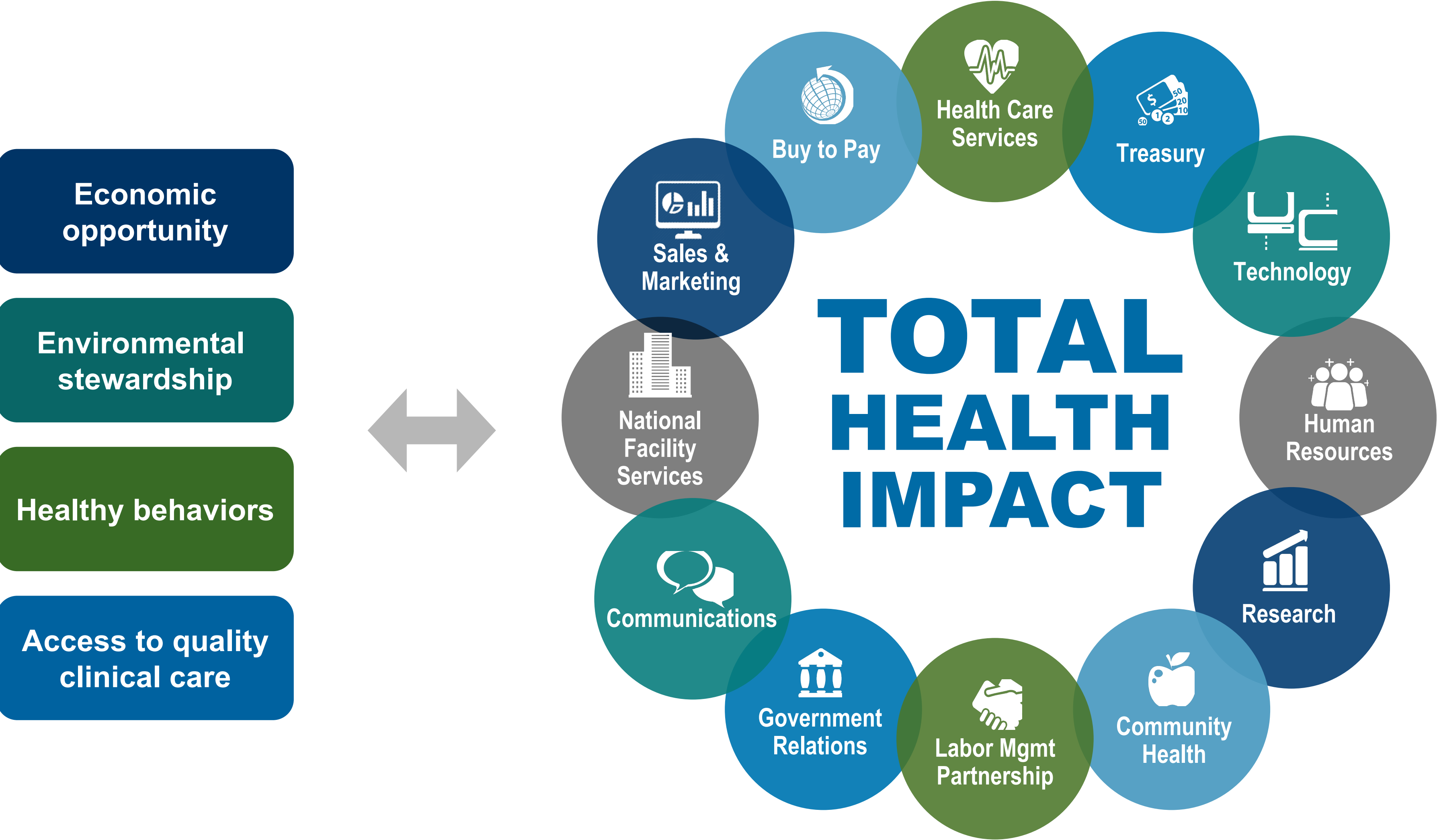
Artificial Intelligence

- Algorithm + machine learning to create resilience index for every school and community
- Use AI-generated insights to recommend resources, create custom interventions

Economic Opportunity



Engaging All Our Assets



Commitment to Supplier Diversity

Kaiser Permanente is a member on the **Billion Dollar Roundtable**, spending more than \$1 billion annually with **minority- and women-owned suppliers**.



ICCC Programs

7

Total KP cohorts completed across U.S.

583

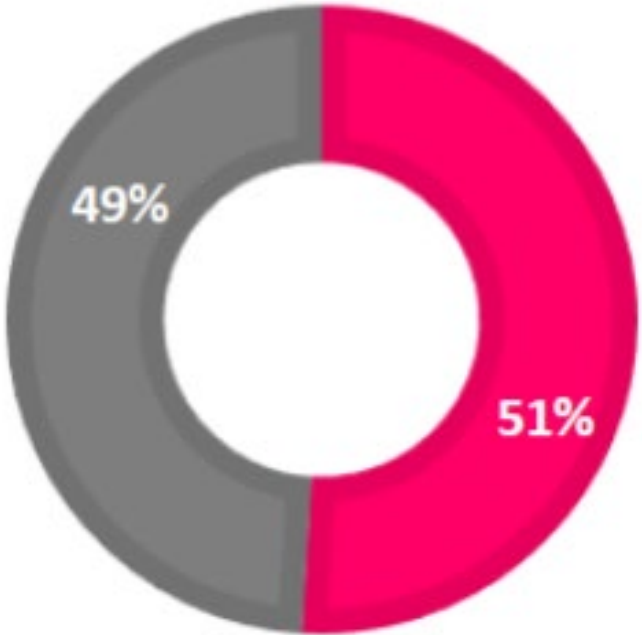
Aggregate number of participants across all KP sponsored cohorts

\$2.4M

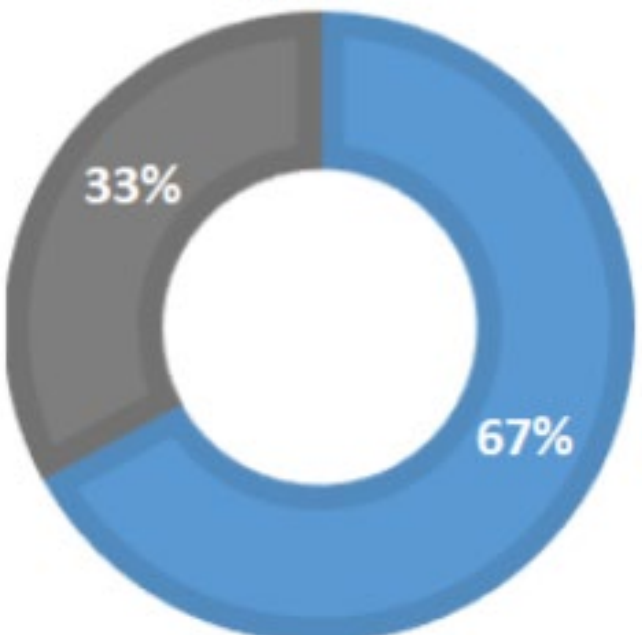
Average revenue of participants

Business Demographics
Across all KP Cohorts 2016-2018

51%
WBE



67%
MBE



\$1.2M total capital raised in one year



129 total jobs created in one year



44% revenue growth in one year

Environmental Stewardship



2025 Environmental Stewardship Goals



Climate Action

Become “carbon net positive” by buying enough clean energy and carbon offsets to remove more greenhouse gases from the atmosphere than we emit.



Sustainable Food

Buy all of our food locally or from farms and producers that use sustainable practices, including using antibiotics responsibly.



Waste Reduction

Recycle, reuse or compost 100% of our non-hazardous waste.



Water Conservation

Reduce the amount of water we use by 25% per square foot of buildings.



Sustaining Sustainability

Meet international standards for environmental management at all of our hospitals.



Safer Products

Increase our purchase of products and materials that meet environmental standards to 50%.



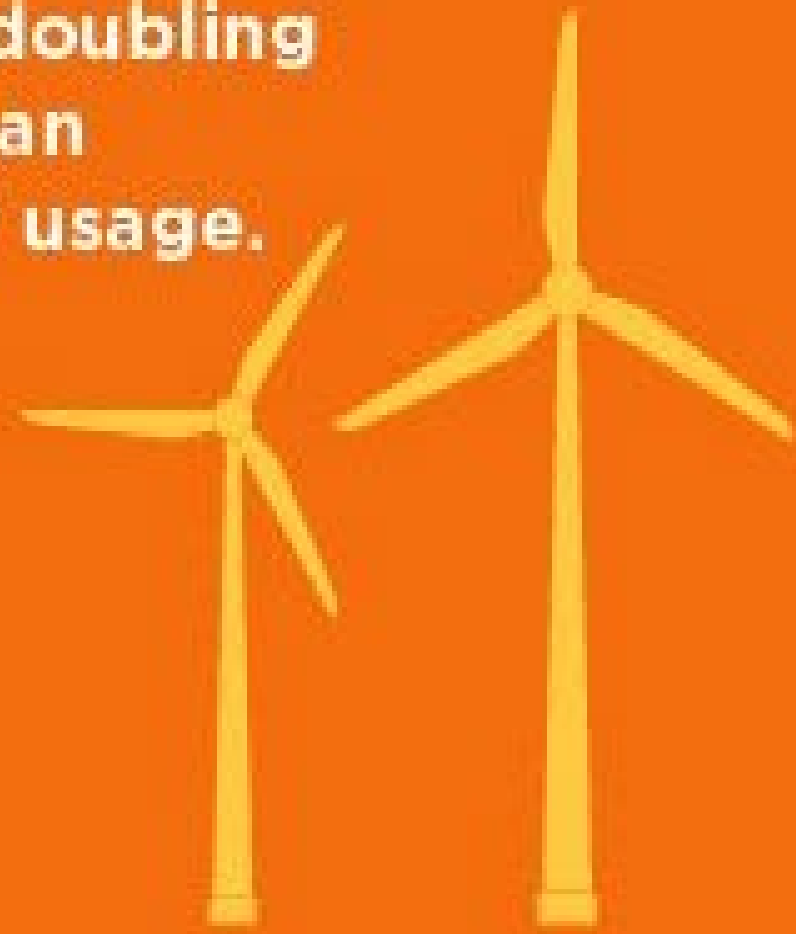
Collaboration

Pursue new collaborations to reduce environmental risks to food sheds, watersheds and air basins supplying our communities.

WE'RE USING CLEAN POWER

We purchase more renewable electricity than any other health care system.

We're doubling our clean energy usage.



WE'RE BECOMING CARBON NEUTRAL

We're on track to become carbon neutral in 2020.

We've reduced our greenhouse gas emissions nearly 30%.



WE'RE CONSERVING WATER

We're committed to increasing our water efficiency by 25%.

We're more than halfway there.



WE'RE AVOIDING TAILPIPE EMISSIONS

In 2017 we filled 23.9 million prescriptions by mail.

Think of how many cars we've kept off the road.



kp.org/green

[#ClimateChangesHealth](https://twitter.com/ClimateChangesHealth)



Questions



Thank You



Lynn Todman, PhD

Executive Director of Population Health
Spectrum Health Lakeland

(269) 983-8654

ltodman@lakelandhealth.org